



The Children's Museum/Ivy Tech Learning Corridor

INDIANAPOLIS, INDIANA



CLIENT:

The Children's Museum of Indianapolis
 Anthony Bridgeman
 Director of Community Initiatives
 (317) 809-2109

SERVICE AREA(S):

Urban Design + Landscape Architecture

TIMEFRAME:

May 2008 - July 2008

PROJECT DESCRIPTION:

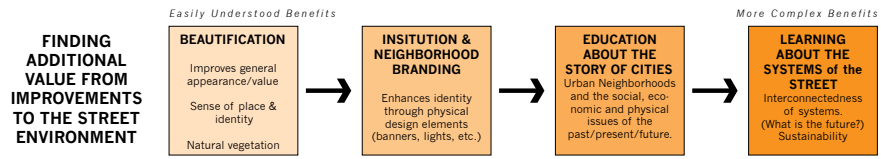
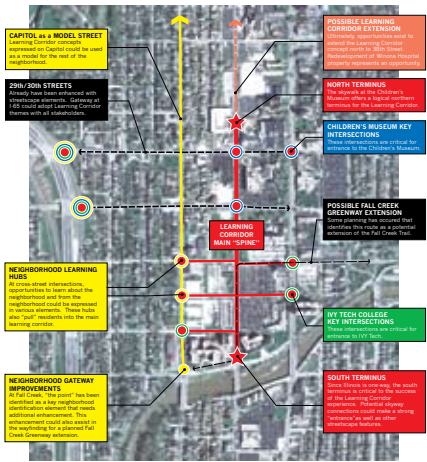
The Children's Museum of Indianapolis is regarded as a premier children's learning facility in the entire United States. In this role, it attracts significant visitors from both Indianapolis and beyond. Additionally, Ivy Tech State College's main Indianapolis campus is located three blocks to the south of the Children's Museum.

Recognizing this potential synergy for connection along the theme of learning, the two organizations retained EDEN Collaborative along with Hitchcock Design Group to craft a high-level vision for the corridor that would be consistent with the values of the community as well as both institutions.

Activities during the process included defining site characteristics, working with local residents, visioning educational opportunities and recommending both near and long term improvements to Illinois Street.

RESULTS:

The Children's Museum is currently utilizing the Learning Corridor Plan to assist with securing funding for its recommendations.



Illustration(s) Credit: Hitchcock Design Group

